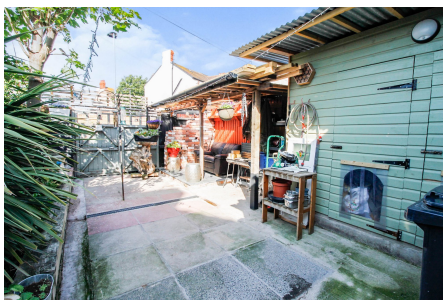


John Street, Rhyl, LL18

£205,000

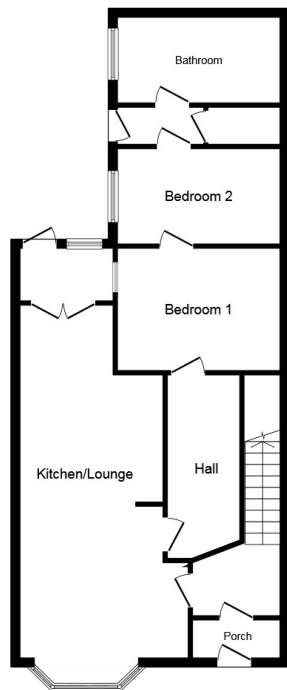
4 3 3



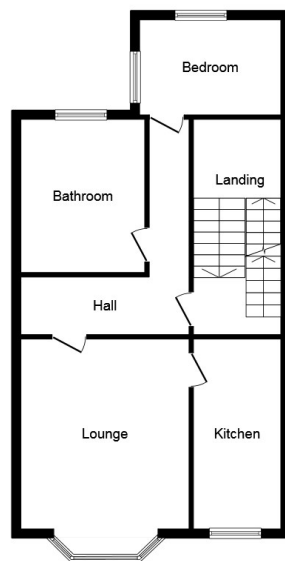
INVESTMENT BEING SOLD WITH TENANT IN SITU. This four/five bedroom property is on three floors and consists of three self contained apartments with the top floor flat being tenanted. The property is close to the seafront and promenade with the Main town centre being close by and decorative rear garden. Producing a good yearly yield it is a great investment property.

## Key Features

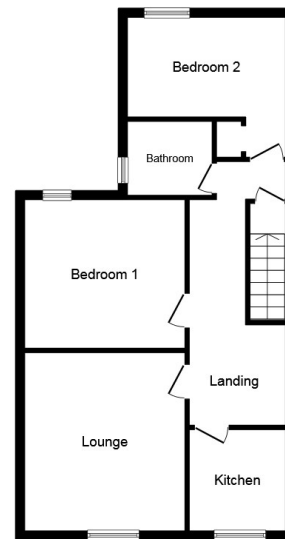
- Investment property
- Close to seafront and promenade
- Three self contained apartments
- Well presented
- Rear garden
- EPC flat 1 - C, Flat 2 - C
- 
- 



**Ground Floor**



**First Floor**



**Second Floor**

Total floor area 203.0 sq.m. (2,185 sq.ft.) approx

This floor plan is for illustration purposes only and may not be representative of the property. The position and size of doors, windows and other features are approximate. Unauthorized reproduction prohibited. © PropertyBOX